

GALLERY⁴⁴




BRITDOR


I SOLID TIMBER CORE

INTRODUCING...

Solid Timber Core Door

The solid door choice for your home with superior strength. Bound to impress with new and exclusive designs, alongside the classic styles, BRITDOR truly is the door to suit any home.



 **Kubu**[®]

Be sure it's secure

All of our doors are supplied Kubu ready. This smart and simple technology enables you to check the status of your door no matter where you are, at any time of the day, right from the Kubu app on your phone.

To find out more or to order Kubu products, please visit www.getkubu.com

Get notifications straight to your phone.

From any place in the world.

On all the homes you look after.

See the status of your door (locked/unlocked)

ULTION

Fitted as standard

A 3* locking cylinder is fitted as standard with every door. If an intruder snaps the Ultion lock and breaks into your home, you will receive cash back as a guarantee.



FEATURES & BENEFITS

Features & Benefits

- ◆ Solid timber core for superior strength, security and durability
- ◆ A robust and durable Thermoplastic CoolSkin outer layer with heat reflective properties. Available with a defined wood-grain finish or opt for the exclusive smooth finish found in the Enzo range
- ◆ Available in the widest range of solid timber core door options - including exclusive styles: Enzo, Glenman and Eaton
- ◆ Variety of popular, standard colours available including first-class wood stains: Golden Oak, Rosewood and Irish Oak
- ◆ Flexible sizing with both taller and narrower door sizes available



DESIGNED & MADE
IN BRITAIN



I Traditional Panelled

CARNOUSTIE ♦ BIRKDALE ♦ PENINA



Door Style · Carnoustie
Colour · Anthracite Grey
Glass · Duo Diamond

Carnoustie

Carnoustie

Carnoustie

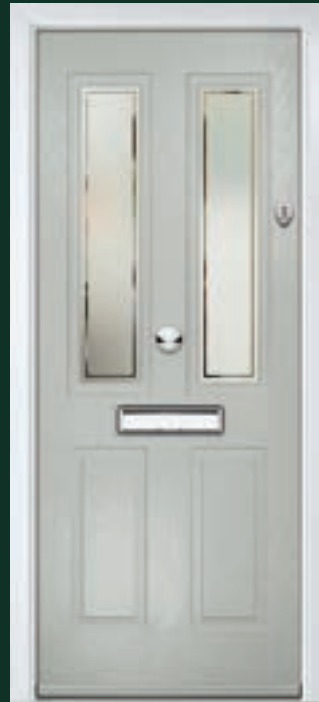
Carnoustie



Colour · Chartwell Green
Glass · Glacier (Carnoustie only)



Colour · Black
Glass · Cameo



Colour · Agate Grey
Glass · Edge (Carnoustie only)



Colour · Rosewood
Glass · Majestic (Carnoustie only)

Birkdale



Colour · Pebble Grey
Glass · Grace Arch (Birkdale and Penina only)

Penina



Colour · Duck Egg Blue
Glass · Oasis

Penina



Colour · Black/ Brown
Glass · Trio of Diamonds

ADDITIONAL GLASS OPTIONS

See page 37 for Pilkington obscure glazing options.



Nordic
(Carnoustie only)



Grace
(Carnoustie only)



Midnight
Black



Deco



Sycamore



Tate



Regency



Olympic



Titanium
(Carnoustie only)

TROON ♦ MUIRFIELD ♦ PINEHURST



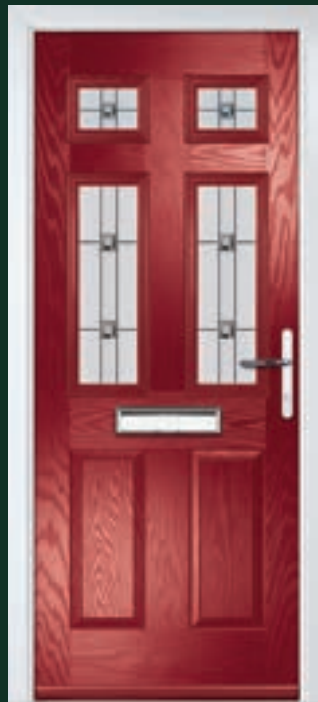
Door Style · Troon
Colour · Agate Grey
Glass · Titanium*

Troon



Colour · Slate
Glass · Tate*

Troon



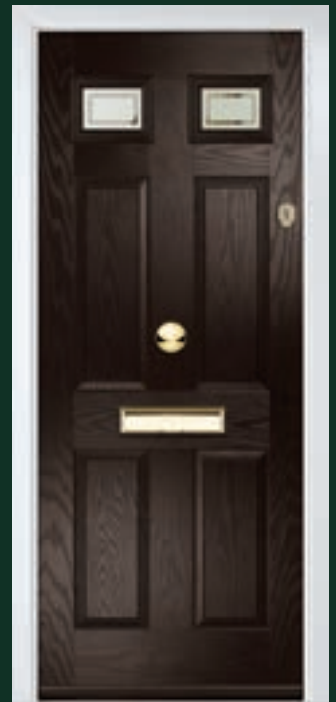
Colour · Red
Glass · Majestic*

Muirfield



Colour · Duck Egg Blue
Glass · Nordic (Muirfield only)

Muirfield



Colour · Black/ Brown
Glass · Edge

Muirfield Solid



Colour · Irish Oak

Pinehurst



Colour · Blue
Glass · Mozaic (Pinehurst only)

Pinehurst



Colour · Black
Glass · Glacier

ADDITIONAL GLASS OPTIONS

See page 37 for Pilkington obscure glazing options.

Troon & Muirfield



Muirfield only



Pinehurst

I Traditional Panelled

RIVIERA ♦ PORTTRUSH



Door Style · Riviera
Colour · Duck Egg Blue
Glass · Oasis

Riviera

Riviera

Riviera

Riviera



Colour · Blue
Glass · Grace



Colour · Cream
Glass · Duo Diamond



Colour · Black
Glass · Glacier



Colour · Silver Grey
Glass · Midnight Black

Riviera



Colour · Red
Glass · Trio of Diamonds

Portrush



Colour · Anthracite Grey
Glass · Majestic

Portrush Sunburst



Colour · Chartwell Green
Glass · Satin*

ADDITIONAL GLASS OPTIONS

See page 37 for Pilkington obscure glazing options.



Cameo

Tate

Edge

Regency

Majestic

*Grid/Sunburst designs are only available with Clear or Pilkington Obscure glazing. Supplied as standard with integral spacer bars to replicate astragal bars.

LYTHAM ♦ TURNBERRY



Door Style · Lytham
Colour · Anthracite Grey
Glass · Edge

Lytham

Lytham

Lytham 4Grid

Lytham 9Grid



Colour · Golden Oak
Glass · Grace



Colour · Agate Grey
Glass · Midnight Black
(Lytham only)



Colour · Green
Glass · Satin*



Colour · Pebble Grey
Glass · Satin*

Turnberry



Colour · Black
Glass · Cameo

Turnberry



Colour · Duck Egg Blue
Glass · Tate

Turnberry



Colour · Blue
Glass · Glacier

ADDITIONAL GLASS OPTIONS

See page 37 for Pilkington obscure glazing options.

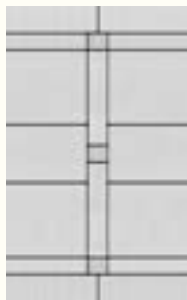
Lytham



Glacier



Cameo



Tate



Enclosed Mini Blind



Regency

Turnberry



Edge



Nordic



Majestic



Trio of Diamonds



Titanium



Grace

EATON ♦ KNIGHTSBRIDGE ♦ TATTON



Door Style · Eaton
Colour · Golden Oak
Glass · Titanium

Eaton

Eaton

Eaton 4Grid

Knightsbridge



Foil Matched Frame

Colour · Black/ Brown
Glass · Edge



Colour · Slate
Glass · Regency



Colour · Red
Glass · Satin*



Colour · Anthracite Grey
Glass · Nordic**

Knightsbridge

Tatton 9Grid

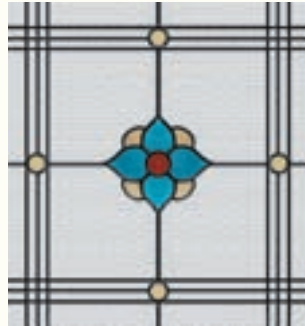


Colour · Pebble Grey
Glass · Tate**

Colour · Agate Grey
Glass · Satin*

ADDITIONAL GLASS OPTIONS

Eaton



Oasis



Glacier

See page 37 for Pilkington obscure glazing options.

SEE PAGE 4-5 FOR ADDITIONAL KNIGHTSBRIDGE GLASS OPTIONS & PAGE 10-11 FOR TATTON OPTIONS



Left Door Style · Tatton
Colour · Chartwell Green
Glass · Edge

Right Door Style · Knightsbridge
Colour · Blue
Glass · Trio of Diamonds**

*Grid/Sunburst designs are only available with Clear or Pilkington Obscure glazing. Supplied as standard with integral spacer bars to replicate astragal bars.

**Glazing options not available in Eaton style.

FARMHOUSE



Door Style · Farmhouse Belfry
Colour · Pebble Grey
Glass · Mozaic

Farmhouse Solid

Farmhouse Pevero

Farmhouse Belfry

Farmhouse Belfry 3



Colour · Irish Oak



Colour · Black
Glass · Midnight Black
(Pevero only)



Colour · Silver Grey
Glass · Glacier



Colour · Blue
Glass · Deco

Farmhouse Belfry



Colour · Red
Glass · Bullion

Farmhouse Pevero



Colour · Duck Egg Blue
Glass · Cameo

Farmhouse Belfry 3



Colour · Slate
Glass · Edge

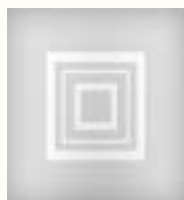
ADDITIONAL GLASS OPTIONS

See page 37 for Pilkington obscure glazing options.

Pevero



Bullion



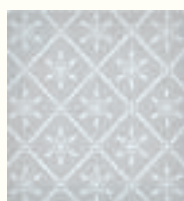
Mozaic



Edge



Glacier

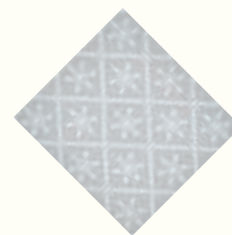


Regency

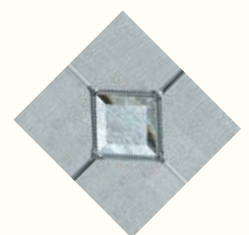


Deco

Belfry



Regency



Cameo

FARMHOUSE



Door Style · Farmhouse Sunningdale
Colour · Blue
Glass · Grace (Sunningdale only)

Farmhouse Sunningdale

Farmhouse Sunningdale

Farmhouse Merion

Farmhouse Merion



Colour · Agate Grey
Glass · Oasis



Colour · Anthracite Grey
Glass · Duo Diamond
(Sunningdale only)



Colour · Chartwell Green
Glass · Edge



Colour · Pebble Grey
Glass · Glacier

Farmhouse Sunningdale



Colour · Green
Glass · Titanium

Farmhouse Merion



Colour · Cream
Glass · Regency

Farmhouse Merion 4Grid



Colour · Red
Glass · Satin*

ADDITIONAL GLASS OPTIONS

See page 37 for Pilkington obscure glazing options.

Sunningdale



Regency

Glacier

Midnight
Black

Cameo

Edge

Mozaic

Majestic

Sycamore

Trio of
Diamonds

Tate

SEE PAGE 12-13 FOR ADDITIONAL MERION GLASS OPTIONS

*Grid/Sunburst designs are only available with Clear or Pilkington Obscure glazing. Supplied as standard with integral spacer bars to replicate astragal bars.

GLENMAN SOLID ♦ GLENEAGLES ♦ ST MARK



Door Style · St Mark
Colour · Anthracite Grey
Glass · Oasis (St Mark only)

St Mark

St Mark

Gleneagles

Glenman Solid



Colour · Agate Grey
Glass · Edge



Colour · Black/ Brown
Glass · Cameo



Colour · Duck Egg Blue
Glass · Tate (Gleneagles only)



Colour · Blue

St Mark



Colour · Green
Glass · Majestic

Gleneagles



Colour · Silver Grey
Glass · Trio of Diamonds

Gleneagles 4Grid



Colour · Chartwell Green
Glass · Satin*

ADDITIONAL GLASS OPTIONS

See page 37 for Pilkington obscure glazing options.

St Mark



Glacier



Regency



Trio of Diamonds

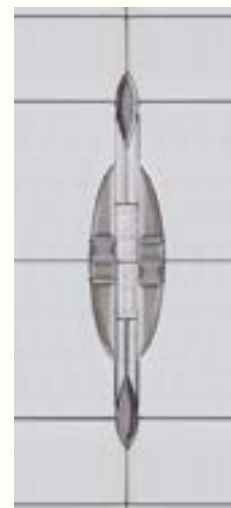
Gleneagles



Glacier



Edge



Majestic



Cameo

*Grid/Sunburst designs are only available with Clear or Pilkington Obscure glazing. Supplied as standard with integral spacer bars to replicate astragal bars.

FLUSH



Door Style · Flush Seminole 4 Centre
Colour · Black
Glass · Nordic

Flush Seminole 4 Left

Flush Seminole 4 Centre

Flush Seminole 4 Right

Flush Vilamoura



Colour · Green
Glass · DECO (Seminole only)



Colour · Duck Egg Blue
Glass · Titanium



Colour · Anthracite Grey
Glass · Edge



Colour · Agate Grey
Glass · Majestic

Flush Seminole 4 Centre



Colour · Cream
Glass · Cameo

Flush Vilamoura



Colour · Chartwell Green
Glass · Trio of Diamonds (Vilamoura only)

Flush Vilamoura



Colour · Black/ Brown
Glass · Sycamore (Vilamoura only)

ADDITIONAL GLASS OPTIONS

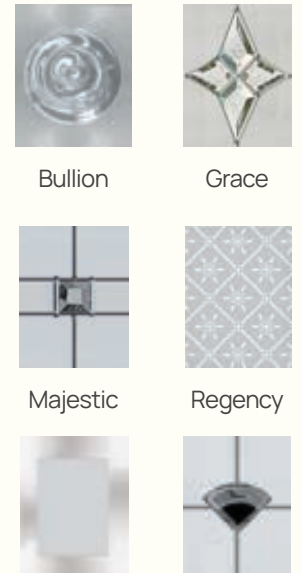
See page 37 for Pilkington obscure glazing options.

Vilamoura



Titanium Duo Diamond Grace Oasis Glacier Midnight Black Edge Regency Nordic Cameo

Seminole



Bullion Grace

Majestic Regency

Glacier Midnight Black

FLUSH



Door Style · Flush Augusta Centre
Colour · Slate
Glass · Olympic

Flush Augusta Left

Flush Augusta Centre

Flush Augusta Long Centre

Flush Augusta Long Centre



Colour · Black
Glass · Deco



Colour · Red
Glass · Glacier



Colour · Agate Grey
Glass · Nordic (Augusta Long only)



Colour · Blue
Glass · Regency (Augusta Long only)

Flush Augusta Centre



Colour · Pebble Grey
Glass · Midnight Black

Flush Augusta Long Left



Colour · Black/ Brown
Glass · Titanium

Flush Augusta Long Centre



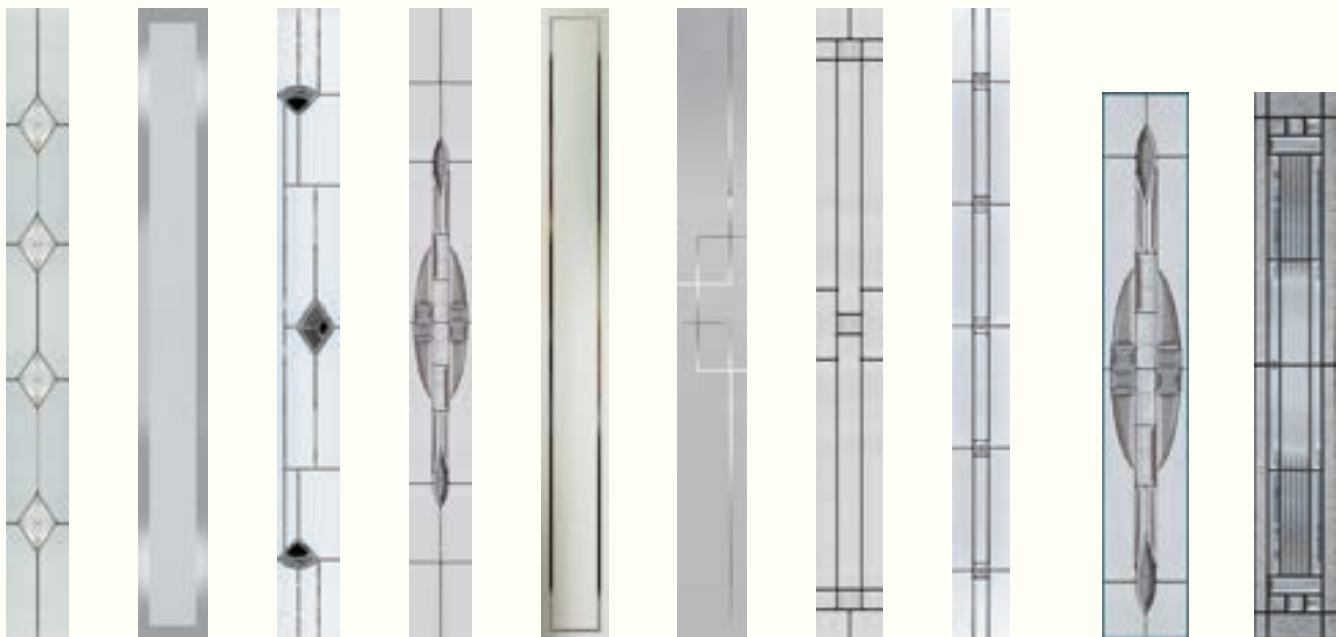
Colour · Green
Glass · Trio of Diamonds (Augusta Long only)

ADDITIONAL GLASS OPTIONS

See page 37 for Pilkington obscure glazing options.

Augusta Long

Augusta



Duo Diamond Glacier Midnight Black Majestic Edge Deco Tate Olympic Majestic Titanium

MONZA II



Door Style · Monza II Augusta Centre
Colour · Agate Grey
Glass · Majestic

Monza II Augusta Centre

Monza II Augusta Left

Monza II Augusta Centre

Monza II Augusta Centre



Colour · Blue
Glass · Olympic



Colour · Cream
Glass · Glacier



Colour · Red
Glass · Midnight Black



Colour · Slate
Glass · Deco

Monza II Augusta Long Centre



Colour · Silver Grey
Glass · Duo Diamond (Augusta Long only)

Monza II Augusta Long Centre



Colour · Anthracite Grey
Glass · Nordic (Augusta Long only)

Monza II Augusta Long Right



Colour · Green
Glass · Edge (Augusta Long only)

SEE PAGE 22-23 FOR ADDITIONAL GLASS OPTIONS



Door Style · Monza II Augusta Long Centre
Colour · Black
Glass · Tate (Augusta Long only)

*Glazing can be positioned centrally or offset to the hinge side only.

MONZA II



Door Style · Monza II Solid
Colour · Black

Monza II Solid

Monza II Solid

Monza II Square Centre

Monza II Square Centre



Colour · Pebble Grey



Colour · Blue



Colour · Chartwell Green
Glass · Mozaic



Colour · Agate Grey
Glass · Glacier

Monza II Square Centre



Colour · Slate
Glass · Deco

Monza II Solid



Colour · Golden Oak

Monza II Square Right



Colour · Cream
Glass · Edge

ADDITIONAL GLASS OPTIONS

See page 37 for Pilkington
obscure glazing options.



Midnight Black



Regency



Cameo



Monza II's linear etched detailing

*Glazing can be positioned centrally or offset to the hinge side only.

ENZO



Door Style · Enzo Augusta Centre
Colour · Anthracite Grey
Glass · Deco

Enzo Augusta Left

Enzo Solid

Enzo Augusta Long Centre

Enzo Augusta Long Centre



Colour · Blue
Glass · Glacier



Colour · Agate Grey

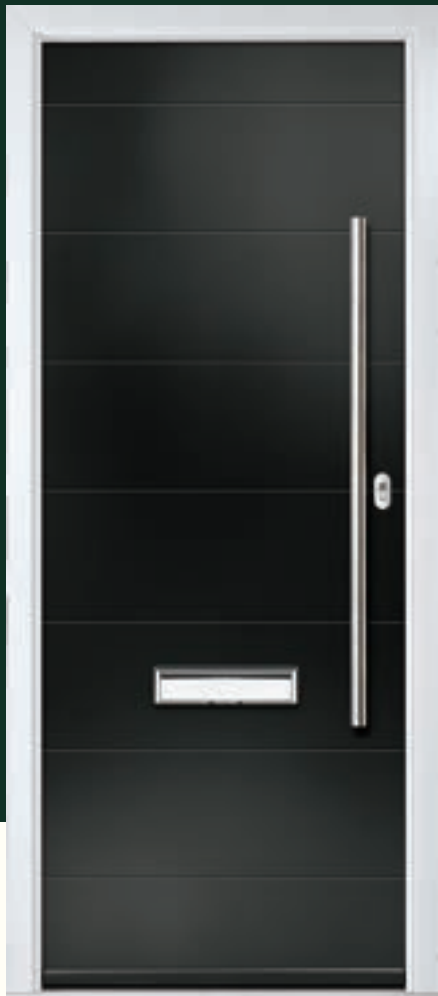


Colour · Black/ Brown
Glass · Nordic (Augusta Long only)



Colour · Red
Glass · Regency (Augusta Long only)

Enzo Solid



Colour · Black

Enzo Augusta Centre



Colour · Duck Egg Blue
Glass · Midnight Black

Enzo Augusta Long Right



Colour · Pebble Grey
Glass · Titanium

SEE PAGE 22-23 FOR ADDITIONAL GLASS OPTIONS



Pre-engraved edge to edge lines on an exclusive smooth stipple finish.

*Glazing can be positioned centrally or offset to the hinge side only.

Build Your Door

Step 1: Choose your door style

Traditional Panelled



Carnoustie



Birkdale



Penina



Pinehurst



Troon



Muirfield



Muirfield Solid



Riviera



Portrush



Portrush Sunburst



Lytham



Lytham 4Grid



Lytham 9Grid



Turnberry

Traditional Farmhouse



Farmhouse Belfry



Farmhouse Belfry 3



Farmhouse Pevero



Farmhouse Sunningdale



Farmhouse Solid



Farmhouse Merion



Farmhouse Merion 4Grid

Traditional Eaton



Eaton Solid



Eaton



Eaton 4Grid



Knightsbridge Solid



Knightsbridge



Tatton



Tatton 4Grid



Tatton 9Grid

Contemporary Glenman



Glenman Solid



St Mark

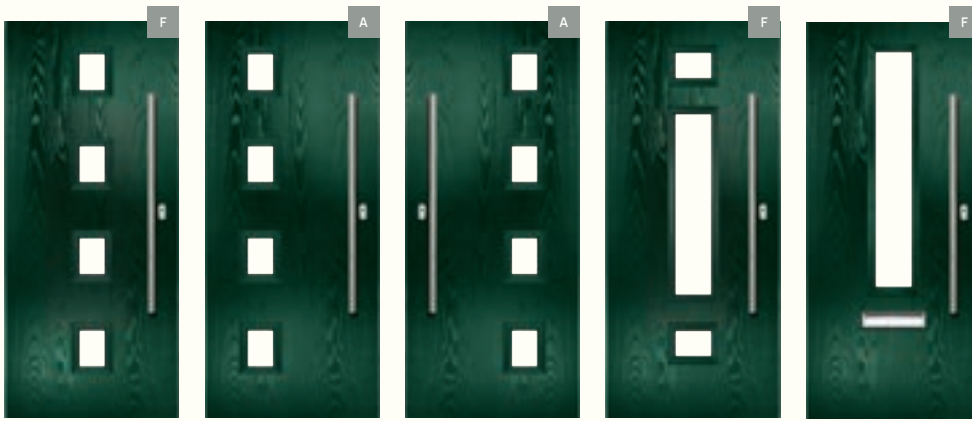


Gleneagles



Gleneagles 4Grid

Contemporary Flush



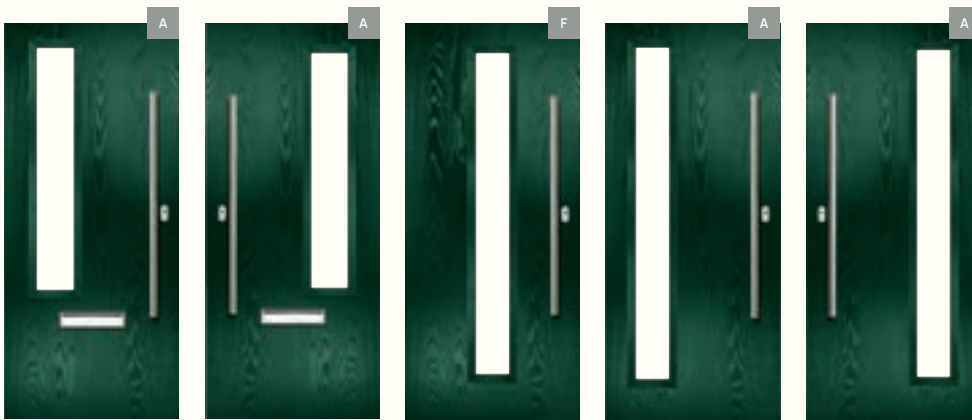
Flush Seminole 4 Centre

Flush Seminole 4 Left

Flush Seminole 4 Right

Flush Vilamoura

Flush Augusta Centre



Flush Augusta Left

Flush Augusta Right

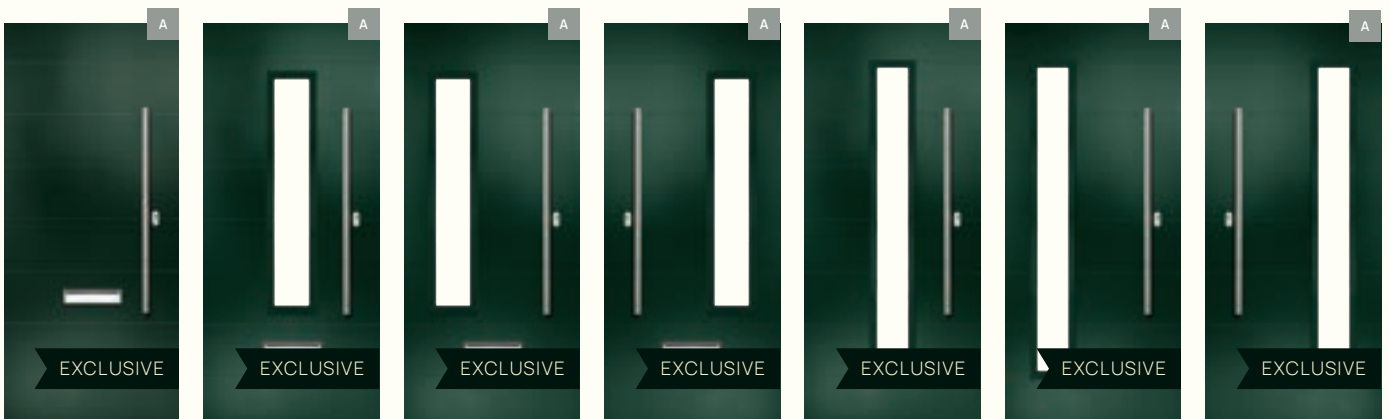
Flush Augusta Long Centre

Flush Augusta Long Left

Flush Augusta Long Right



Designer Enzo



Enzo Solid

Enzo Augusta Centre

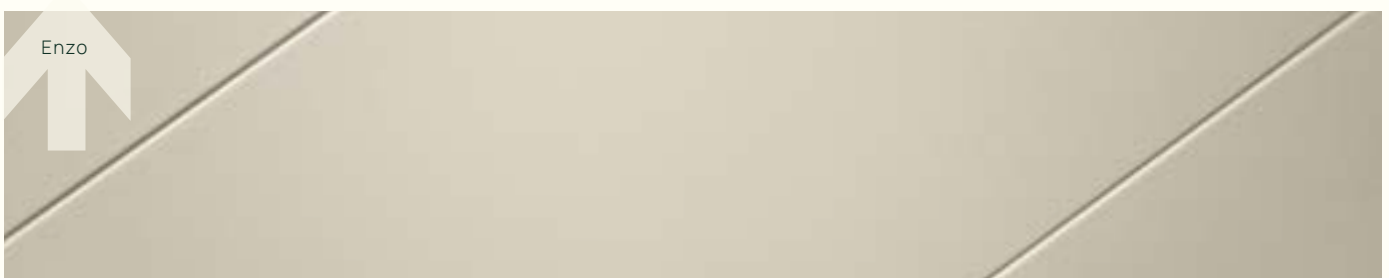
Enzo Augusta Left

Enzo Augusta Right

Enzo Augusta Long Centre

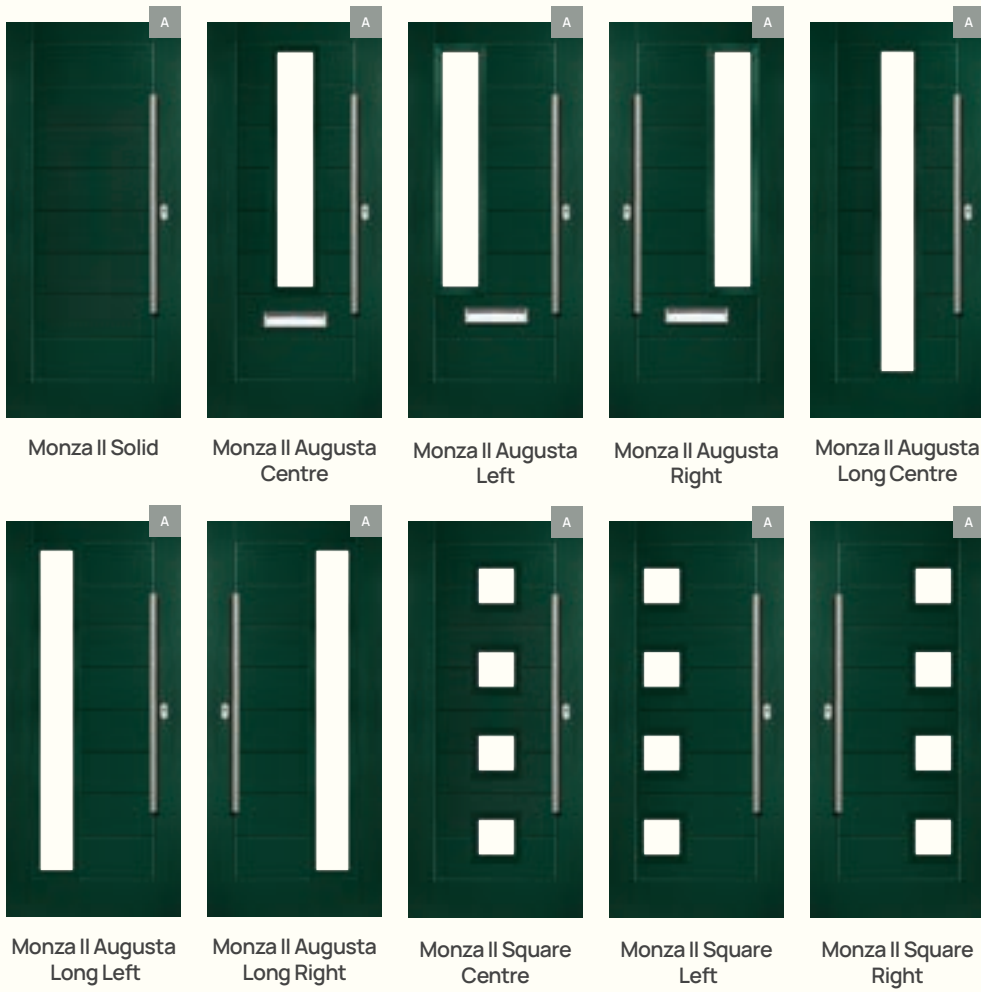
Enzo Augusta Long Left

Enzo Augusta Long Right



See page 34 for Min/Max Sizes

Designer Monza II



See page 34 for Min/Max Sizes



Standard

All Panelled, Farmhouse, Eaton and Glenman door ranges as well as the Flush Seminole and Flush Villamoura door styles are supplied with this glazing cassette.



Flat Grain

All Flush Augusta, Flush Augusta Long and all doors in the Monza II range are supplied with this glazing cassette.



Flat Stipple

All doors in the Enzo range are supplied with this glazing cassette.

Build Your Door

Step 2: Check sizes and choose your door and frame colour

MIN / MAX MEASUREMENTS

Refer to label on door style to check Min/Max measurements of door frame excluding any projection cills or frame extenders.

Key	Standard 80mm Outer Frame		Slim 65mm Outer Frame		Threshold	Std 80mm Outer Frame Head		Slim 65mm Outer Frame Head	
	Min Width	Max Width	Min Width	Max Width		Min Height	Max Height	Min Height	Max Height
A	859	1033	830	1004	Std 80mm PVC Threshold	2013	2213	1999	2198
B	881	1033	852	1004	Low 65mm PVC Threshold	1999	2199	1985	2184
C	839	1033	810	1004	Ali. Low Threshold	1968	2168	1954	2153
D	849	1033	820	1004					
E	851	1033	822	1004					
F	619	1033	590	1004					
G	451	569	422	540					

Please add 20mm to minimum widths for all doors with Pull Escutcheons inside and outside except for the following designs which will need 50mm adding due to the glazing cassette:

Carnoustie, Birkdale, Penina, Troon, Riviera, Lytham, Turnberry, Merion, St Mark, Gleneagles, Eaton, Knightsbridge, Tatton and including all corresponding Grid designs.

Reduced minimum widths available on some door designs using an alternative lock, speak to your installer for more details. See page 39 for frame / threshold details.

FRAME COLOUR

				<div style="border: 1px solid black; padding: 5px; text-align: center;"> Key  External / Internal </div>
White/ White	White Ash/ White Ash*	Cream White/ White	Agate Grey/ White	
				
Rosewood/ White	Rosewood/ Rosewood	Anthracite Grey/ White	Anthracite Grey/ Anthracite Grey	
				
Golden Oak/ White	Golden Oak/ Golden Oak	Anthracite Grey Smooth/ White	Slate Grey/ White	
				
Irish Oak/ White	Chartwell Green/ White	Black Ash/ White**	Black Ash/ Black Ash**	

*We do not recommend trying to match the White Ash outer frame colour with the White door colour, as they are significantly different in appearance.

**For black doors which require matching outer frames, we recommend using the Black Ash outer frame colour with the Black/Brown door colour. The standard "Black" will not match.

Additional colours available upon request. Some colours may be special order depending on door opening direction and outerframe size. Frame colours may differ slightly from door colours.

DOOR COLOUR

The internal colour of your door can either be white or you can upgrade and match to the external colour.



Black



Black/ Brown



Anthracite Grey



Slate



Blue



Green



Red



Chartwell Green



Duck Egg Blue



Silver Grey



Agate Grey



Pebble Grey



Cream



White

PERFECT STAINING

Colours and stains achieved using foil technology allowing for seamless colour matching with coloured and stained door and window frames.



Irish Oak



Golden Oak

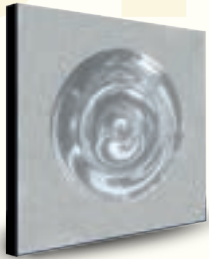


Rosewood

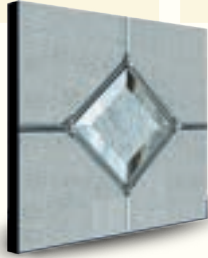
We have made every effort to match the colour and stain you see in the brochure so it's as close as possible to the skin when applied to the doors. Due to the nature of the product it is applied to, there is sometimes a difference between them which we cannot avoid. The colour, intensity and sheen level may differ from the paper print version and we do not accept any liability for this for whatever reason. To ensure that you are getting the right colour on your door, you can request a colour booklet.

Build Your Door

Step 3: Choose your glass and check availability



Bullion



Cameo



Deco



Duo Diamond



Edge



Glacier



Grace



Majestic



Midnight Black



Mozaic



Nordic



Oasis



Olympic



Regency



Sycamore



Tate



Titanium



Trio of Diamonds

Glazing images shown are for illustrative purposes only, specific designs may differ per door style and designs for each door should be checked on the relevant door style pages. Speak to your installer for more details.

	Carnoustie/Knightsbridge	Birkdale	Penina	Troon	Muirfield	Pinehurst	Riviera	Portrush	Portrush Sunburst	Lytham/ Tatton	Lytham/ Tatton 4Grid& 9Grid	Turnberry	Eaton/ Merton	Eaton/ Merton 4Grid	Farmhouse Belfry/ Belfry 3	Farmhouse Pevero	Farmhouse Sunningdale	Flush Seminole 4	Flush Vilamoura	All Augusta Styles	All Augusta Long Styles	Monza II Square	St Mark	Gleneagles	Gleneagles 4Grid
Bullion					•	•									•	•		•							
Cameo	•	•	•	•	•	•	•	•		•		•			•	•	•	•	•			•	•	•	
Clear	•	•	•	•	•	•	•	•	•	•	•	•	•	•	•	•	•	•	•	•	•	•	•	•	•
Deco	•	•	•		•	•									•	•		•	•	•	•	•	•	•	
Duo Diamond	•	•	•	•	•		•	•									•		•			•			
Edge	•			•	•	•	•	•		•		•	•		•	•	•	•	•			•	•	•	
Enclosed Mini Blind										•															
Glacier	•			•	•	•	•	•		•		•	•		•	•	•	•	•	•	•	•	•	•	
Grace	•	•	•	•	•		•	•		•		•			•	•	•	•	•	•	•	•	•	•	
Majestic	•			•	•		•	•		•							•	•	•	•	•	•	•	•	
Midnight Black	•	•	•	•	•	•	•	•		•					•	•	•	•	•	•	•	•	•	•	
Mozaic						•									•	•	•	•	•			•			
Nordic	•				•					•								•	•	•	•	•	•	•	
Oasis	•	•	•	•	•		•	•					•		•	•	•	•	•	•	•	•	•	•	
Obscure	•	•	•	•	•	•	•	•	•	•	•	•	•	•	•	•	•	•	•	•	•	•	•	•	•
Olympic	•	•	•																	•	•	•			
Regency	•	•	•	•	•	•	•	•		•			•		•	•	•	•	•	•	•	•	•	•	
Sycamore	•	•	•	•	•												•	•	•						
Tate	•	•	•	•			•	•		•		•					•	•	•	•	•	•	•	•	•
Titanium	•			•	•					•			•				•	•	•	•	•	•	•	•	
Trio of Diamonds	•	•	•	•	•		•	•		•							•	•	•	•	•	•	•	•	

Pilkington Obscure Patterns

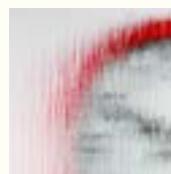
Speak to your installer about more options and information.



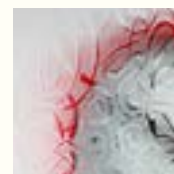
Autumn™



Contora™



Cotswold™



Everglade™



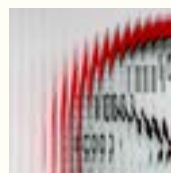
Flemish™



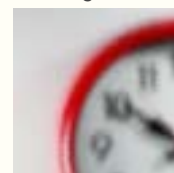
Minster™



Oak™



Reeded™



Stippolyte™



Satin™

© These images are copyrighted and are reproduced by permission of Pilkington United Kingdom Limited.

Build Your Door

Step 4: Choose your frame configuration

Composite Side Panel Options

Composite side panels are available to match selected door styles, or choose the Augusta Long which can go with any door.

All sidelights must be coupled to the composite door.



Muirfield Solid

Muirfield

Troon

Carnoustie

Birkdale

Penina Left

(Penina Right available)

Augusta Long

Augusta Long

Troon



Colour · Duck Egg Blue
Glass · Trio of Diamonds



Colour · Slate
Glass · Duo Diamond

Decorative, Clear & Obscure Glass Options

Complementary glass is also available to match up with many of our decorative units.

For decorative glass options, please refer to corresponding door style.

See page 34 for Composite Side Panel Min/Max Measurements and heights.



Glazed Coupled Toplight



Glazed Integrated Toplight



Glazed Sidelight*

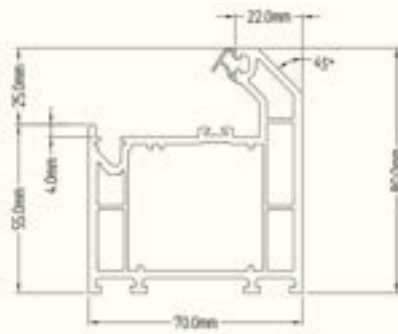
Glazed Sidelight & Toplight Options

For our Glazed Toplights and Sidelights, there is an option for clear glazing or any Pilkington Obscured Pattern.

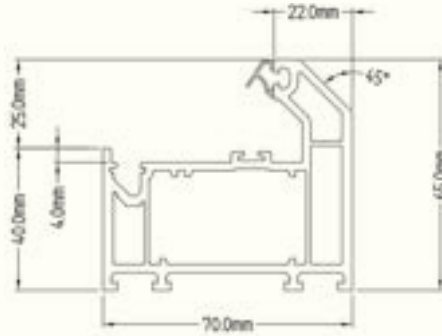
Toplights can be integrated within the door frame using a transom or coupled to the composite door.

All sidelights must be coupled to the composite door.

PROFILES



Standard 80mm PVC Frame*



Slim 65mm PVC Frame*

*Both the Standard 80mm and the Slim 65mm frames can be used as door thresholds where required.

**Low Aluminium Threshold has an overall height of 15mm

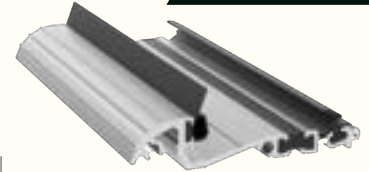
Composite and Glazed Side Panels are not available with Low Aluminium Thresholds.

Part M Compliant



Gold Low Aluminium Threshold**

Part M Compliant



Silver Low Aluminium Threshold**



Build Your Door
Step 5: Choose your door furniture

STANDARD RANGE

Default handle



Balmoral Lever/Handle

Offset Split Spindle version available.



Balmoral Offset Lever/Pad Handle



Urn Knocker

Integrated spyhole option available in Polished Chrome & Gold only



Horsetail Knocker



Contemporary Knocker



Premium Doctor Knocker

Polished Chrome only



Standard Letterplate



Architectural Letterplate

Chrome, Graphite, Gold & Antique Black only.



PAS 24 Security Letterplate

Circle shows internal view of letterplate



Numerals

Polished Chrome & Gold only



Spyhole

Polished Chrome & Gold only

Standard Range Colour Options



White



Gold



Polished Chrome



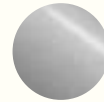
Premium Satin



Antique Black



Smooth Black



Graphite

HERITAGE RANGE



Heritage Lever/Handle

Smooth Black not available



Heritage Centre Door Pull



Heritage Bull Ring Knocker



Heritage Finger Pull



Heritage Letterplate

Smooth Black not available

Heritage Range Colour Options



Antique Black



Smooth Black



Gold



Polished Chrome



Graphite

STAINLESS STEEL RANGE



Stainless Steel
1800mm Bar Handle*



Stainless Steel
1200mm Bar Handle*



Stainless Steel
600mm Bar Handle*



Stainless Steel
Finger Pull



Stainless Steel
Escutcheon



Stainless Steel
Letterplate



Range also available
in Textured Black

*As standard, bar handles are fitted externally only, with both a finger pull and thumbturn fitted internally. Alternatively upgrade and have bar handles fitted both internally and externally.

SWEET RANGE



Sweet Lever/Lever
Handle



Sweet Offset
Lever/Pad Handle

Anthracite Grey not available.



Sweet Numerals

White and Anthracite Grey
not available.



Sweet Square
Letterplate

Anthracite Grey not available.



Sweet Classic
Knocker

Rose Gold and Anthracite Grey
not available.



Sweet Classic
Knocker with Viewer

Rose Gold and Anthracite Grey
not available.



Sweet 2-Part
Knocker

White and Anthracite Grey
not available.



Sweet 2-Part
Knocker with Viewer

White and Anthracite Grey
not available.

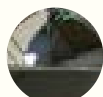
Sweet Range Colour Options



White



Smooth
Black



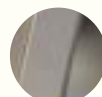
Polished
Chrome



Gold



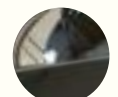
Rose
Gold



Satin
Nickel



Anthracite
Grey



Stainless

Build Your Door

Step 6: Choose your hardware options

HINGES



White



Black



Chrome



Satin



Gold



Anthracite Grey

LOCKS

Kubu Ready

All door locks are Kubu ready as standard.

Our standard multipoint hook lock is supplied as default with Lever/Lever, Lever/Pad or Offset Lever/Lever Handles.

The NEW Autofire Slamshut lock is used with bar handle/escutcheon configurations.

For doors with bar handles, choose from the high-level or low-level lock position (see right). For doors with Pull Escutcheons/Finger Pulls inside and outside, the high-level lock position must be used. The Autofire lock can be used with Lever/Lever handles upon request.



Low-Level
Autofire Lock



High-Level
Autofire Lock



Low-Level Autofire Lock
(with Lever/Lever Handle)



Standard Multipoint
Hook Lock



Presenting the NEW Autofire lock!

Comprised of independent latches that auto-engage when the door is shut. For added peace of mind and security, each latch is triggered independently unlike alternative lock options.

CYLINDERS

Ultion 3* Cylinder

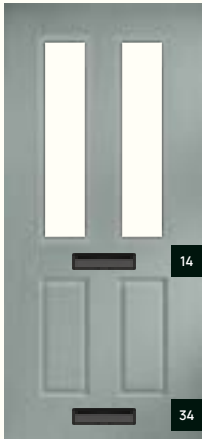
Supplied as Key entry inside and outside as standard, internal thumb turn upgrade available. All doors supplied with 3 keys as standard.

Keyed alike cylinders for multiple doors using the same key and extra keys for your door are available, speak to your installer for more details.



LETTERPLATE POSITIONS

Images are to represent door letterplate position in relation to glass and mouldings, the available door styles for those positions are listed below each image.



Carnoustie
Birkdale
Penina
Portrush (inc Sunburst)
Turnberry
Lytham
Muirfield (inc Solid)
Pinehurst
Troon



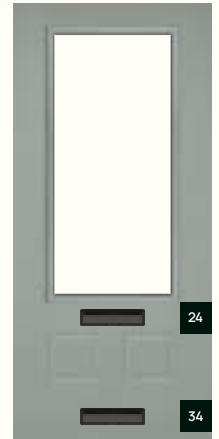
Eaton
Eaton 4Grid
Eaton Solid



Tatton
Tatton 4Grid
Tatton 9Grid
Knightsbridge
Knightsbridge Solid



St Mark



Gleneagles
Gleneagles 4Grid
Glenman Solid



Farmhouse Belfry 3



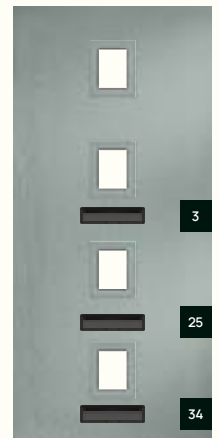
Farmhouse Merion
Farmhouse Merion 4Grid



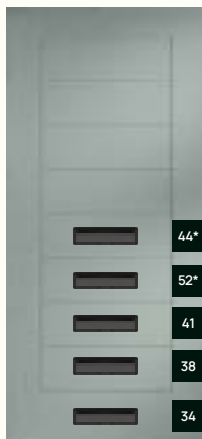
Farmhouse Sunningdale
Farmhouse Pevero
Farmhouse Belfry
Farmhouse Solid



Flush Augusta Centre
Flush Augusta Left
Flush Augusta Right



Flush Seminole 4 Centre
Flush Seminole 4 Left
Flush Seminole 4 Right



Monza II Solid
Monza II Augusta Centre
Monza II Augusta Left
Monza II Augusta Right
(*Monza II Solid only)



Monza II Augusta Long Left
Monza II Square Left



Monza II Augusta Long Right
Monza II Square Right



Enzo Solid
Enzo Augusta Centre
Enzo Augusta Left
Enzo Augusta Right
(*Enzo Solid only)



ALL Flush/Monza/Enzo Augusta Long options (Centre, Left or Right)
Flush Vilamoura
Monza II Square 4 Centre

Images on this page represent popular and common letterplate positions, other positions may be available upon request.

Letterplate positions 34 and 64 at bottom of door may not be compatible with a drip bar on doors under a certain height, it may only be possible to fit one of either the letterplate and the drip bar (please note it is highly recommended to have a drip bar on open in doors), speak to your installer for more details.

GALLERY⁴⁴

All images portrayed in this brochure should not be reproduced without specific written permission from the original owner of the artwork. Images, designs and colours are for illustrative purposes only and may differ when manufactured. We reserve the right to amend or withdraw any products within this brochure without prior notice. Door colours shown in this brochure should be used for guidance only. We have made every effort to match the colour and stain you see in the brochure so it's as close as possible to the skin when applied to the doors. Due to the nature of the product it is applied to, there is sometimes a difference between them which we cannot avoid. The colour, intensity and sheen level may differ from the paper print version and we do not accept any liability for this for whatever reason. To ensure that you are getting the right colour on your door, you can request a colour booklet.